

ACUS 1.1

ACUS 1.1 25W 12° 4000K 700mA HC

Cod: **ACU01FCS200Z00**



IdroSkud® protection system

- polarity reversal protection
- voltage spikes protection
- water infiltration protection



Protection class III

Designed to be supplied from a separated extra-low voltage (SELV) power supply



IP 67

Protected against temporary immersion (30 minutes) up to 1 meter



IP 66

Protected against powerful power jets, 100 liters per minute



IK 10

Protected against impact of 20 J



High temperatures

Design to withstand temperatures up to +50° C



Drive-over

Fixture design to withstand a static load up to 20 kN



CX - Extreme

corrosion resistance level ISO 9223



Mizar warranty

5 years warranty



Technical description

Inground luminaire, drive-over, suitable for outdoor environments (IP66/IP67), with operating temperature range: -20°C / +50°C. To reduce weight and ensure corrosion resistance, the body is made of aluminum and the round frame of steel. The light source is LED C.O.B powered by constant current, max 700mA, for maximum power of 25W. The high luminous flux makes it ideal for marking pedestrian and driveway paths or illuminating facades and architectural details thanks to the optics with reflector. The LED source is recessed for greater visual comfort. Color rendering index CRI > 90. Acus is equipped with IdroSkud® system to protect electronic components from voltage spikes, polarity reversal and water infiltration. There are optionals for anti-glare (honeycomb and louvre) and installation accessories (drive-over outercase). The product must be combined with a power supply to ensure its operation. The power supply must be ordered separately. The amount of luminaires that can be connected to a single power supply varies depending on the type of installation. It is up to the installer to verify the possible voltage drop by evaluating the distance between the product and the power supply.

Lighting data

Source type	COB LED
CCT	4000K
CRI	> 90
MacAdam (SDCM)	3
Source lumen output (lm)	2828
Luminaire lumen output (lm)	2065
Light emission	Narrow
Beam angle	12°

Photobiological risk	RG1
ULR	100.00%
BUG Rating	B0 U5 G0
CIE Flux Code	0 0 0 0 100
LED lifetime	L80 B10 50.000h
Efficiency class	This product contains a light source of energy efficiency class (EU2019/2015): F

Mechanical data

Diameter (mm)	140
Height (mm)	106
Weight (Kg)	1.29
IP Rating	IP66 / IP67
IK rating	IK10
Shape	Round
Finishing colour	Steel
Frame material	Shot peened stainless steel 316L
Body material	Anodized aluminum anticorodal 6082
External screws material	Stainless steel 316L (A4)
Diffuser material	Extraclear tempered glass

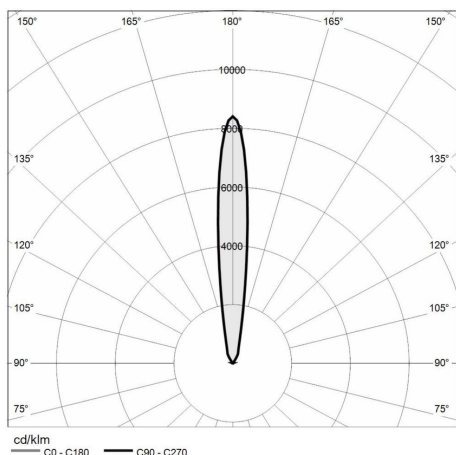
Diffuser thickness (mm)	12
Class ISO 9223	CX
Optic type	Technopolymer metalized reflector
Optical optional	Honeycomb
Maximal working temperature	+50° C
Minimal working temperature	-20° C
Maximum static load (kg)	2000
Walk-over	Yes
Drive-over	Yes
Maximal surface temperature	+60° C
Areas EN 60598-2-13	A1 / A2 / A3 / A4

Electrical data

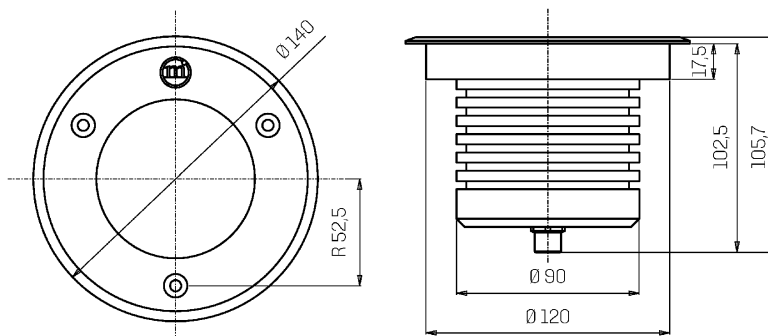
Nominal power (W)	25
Power supply (input power type)	Costant current - 700 mA
Ballast	Remote
Insulation class	III
Dimmable	Yes (PWM)
Connector type	M12 - 5 poles IP67
Power cable length	Not pre-wired

Electrical connection	Series connection
Idroskud® protection	Yes
Inverse polarity protection	Yes
Voltage spikes protection	Yes

Photometry



Technical drawing



Accessories



DRIVE-OVER OUTERCASE

Outer case drive-over ACUS

Cod: ACUZZZ000



NOT DIMMABLE POWER SUPPLY

POWER SUPPLY DC 5-44V 700MA 30W
MAX

Cod: MID0022



NOT DIMMABLE POWER SUPPLY

Power supply DC 25-85V 15/70W
350-700mA IP20

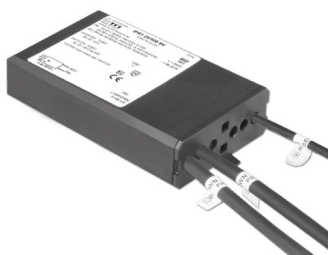
Cod: MID0024



DIMMABLE POWER SUPPLY

POWER SUPPLY DC 10-54V 1,5/38W
150-1050MA IP20 DALI/NFC

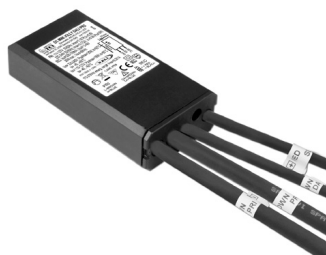
Cod: MID0025



NOT DIMMABLE POWER SUPPLY

POWER SUPPLY DC 10-50V 15/70W
700MA IP68

Cod: MID0026



DIMMABLE POWER SUPPLY

POWER SUPPLY DC 2-49V 1/30W
250-700MA IP68 DALI

Cod: MID0027