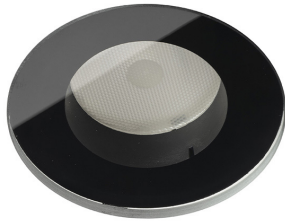


# CAELUM 3.0

CAELUM 3.0 7W BLACK 20° 2700K 24V  
HB 0,4M

Cod: **CLM03CCM100A00**

Metel: **CLMCAM005**



**IdroSkud®** protection system  
polarity reversal protection +  
voltage spikes protection + water  
infiltration protection



**Protection class III**  
Designed to be supplied from a  
separated extra-low voltage  
(SELV) power supply



**IP 68**  
Protected against continuous  
immersion up to 3 meters



**IP 66**  
Protected against powerful power  
jets, 100 liters per minute



**IK 10**  
Protected against impact of 20 J



**High temperatures**  
Design to withstand temperatures  
up to +50° C



**CX - Extreme**  
corrosion resistance level ISO 9223



**Mizar warranty**  
5 years warranty



## Technical description

CAELUM is a range of completely flush-mounted ceiling recessed fixtures, suitable for outdoor environments (IP66/IP68) with an operating temperature range of -20°C to +50°C. Its distinctive feature is its tempered glass screen without a metal ring, silk-screened in black or white. Available in transparent or satin finish. The body is made of black anodized anticorrosive aluminum. The light source consists of a single power LED chip, in 2W, 3W, or 7W versions, powered by 24Vdc constant voltage. The essential design makes it ideal for installation in elegant indoor and outdoor environments, as well as for high-humidity situations (spas, cellars). The light source is recessed for greater visual comfort. Color rendering index CRI > 90. The fixture is equipped with the IdroSkud® system to protect the electronic components from voltage spikes, polarity reversal, and water infiltration. The product must be combined with a power supply to ensure its operation. The power supply must be ordered separately. The number of devices that can be connected to a single power supply varies depending on the type of installation. It is the installer's responsibility to check for potential voltage drops by evaluating the distance between the product and the power supply.

## Lighting data

|                             |                       |                      |  |
|-----------------------------|-----------------------|----------------------|--|
| Source type                 | single chip power LED | Photobiological risk | RG0  |
| CCT                         | 2700K                 | ULR                  | 0,00%  |
| CRI                         | > 90                  | BUG Rating           | B1 U0 G0   |
| MacAdam (SDCM)              | 2                     | CIE Flux Code        | 90 96 99 100 100   |
| Source lumen output (lm)    | 445                   | LED lifetime         | L80 B10 50.000h  |
| Luminaire lumen output (lm) | 312                   | Efficiency class     | This product contains a light source of energy efficiency class (EU2019/2015): G |
| Light emission              | Medium                |                      |  |
| Beam angle                  | 20°                   |                      |  |

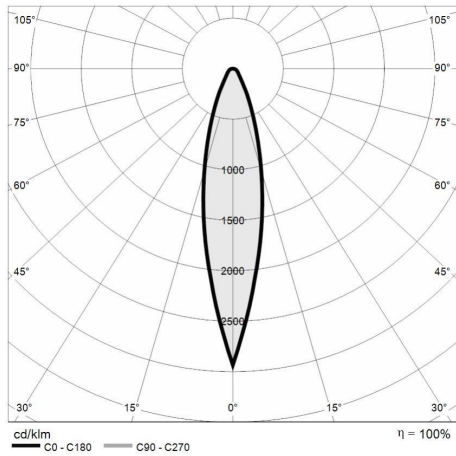
## Mechanical data

|                  |                                    |                             |                           |
|------------------|------------------------------------|-----------------------------|---------------------------|
| Diameter (mm)    | 85                                 | Diffuser material           | Extraclear tempered glass |
| Height (mm)      | 108                                | Diffuser thickness (mm)     | 10                        |
| Weight (Kg)      | 0.632                              | Class ISO 9223              | CX                        |
| IP Rating        | IP66 / IP68                        | Optic type                  | Technopolymer TIR Lens    |
| IK rating        | IK10                               | Optical optional            | Honeycomb                 |
| Finishing colour | Black silk-screen                  | Maximal working temperature | +50° C                    |
| Body material    | Anodized aluminum anticorodal 6082 | Minimal working temperature | -20° C                    |

## Electrical data

|                                 |                                  |                             |                     |
|---------------------------------|----------------------------------|-----------------------------|---------------------|
| Nominal power (W)               | 7                                | Electrical connection       | Parallel connection |
| Power supply (input power type) | Costant voltage - 24V DC         | Idroskud® protection        | Yes                 |
| Ballast                         | Remote                           | Inverse polarity protection | Yes                 |
| Insulation class                | III                              | Voltage spikes protection   | Yes                 |
| Dimmable                        | Yes                              |                             |                     |
| Power cable type                | H05RN - F 2x0,75 mm <sup>2</sup> |                             |                     |
| Power cable length              | 0,4 m                            |                             |                     |

**Photometry**



**Technical drawing**

