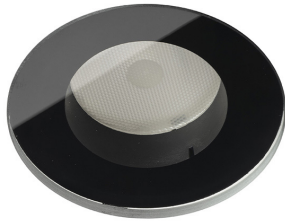


CAELUM 3.0

CAELUM 3.0 7W BLACK 60° 3000K 24V
0,4M

Cod: **CLM03DCL000A00**

Metel: **CLMDAL004**



IdroSkud® protection system
polarity reversal protection +
voltage spikes protection + water
infiltration protection



Protection class III
Designed to be supplied from a
separated extra-low voltage
(SELV) power supply



IP 68
Protected against continuous
immersion up to 3 meters



IP 66
Protected against powerful power
jets, 100 liters per minute



IK 10
Protected against impact of 20 J



High temperatures
Design to withstand temperatures
up to +50° C



CX - Extreme
corrosion resistance level ISO 9223



Mizar warranty
5 years warranty



Technical description

CAELUM is a range of completely flush-mounted ceiling recessed fixtures, suitable for outdoor environments (IP66/IP68) with an operating temperature range of -20°C to +50°C. Its distinctive feature is its tempered glass screen without a metal ring, silk-screened in black or white. Available in transparent or satin finish. The body is made of black anodized anticorrosive aluminum. The light source consists of a single power LED chip, in 2W, 3W, or 7W versions, powered by 24Vdc constant voltage. The essential design makes it ideal for installation in elegant indoor and outdoor environments, as well as for high-humidity situations (spas, cellars). The light source is recessed for greater visual comfort. Color rendering index CRI > 90. The fixture is equipped with the IdroSkud® system to protect the electronic components from voltage spikes, polarity reversal, and water infiltration. The product must be combined with a power supply to ensure its operation. The power supply must be ordered separately. The number of devices that can be connected to a single power supply varies depending on the type of installation. It is the installer's responsibility to check for potential voltage drops by evaluating the distance between the product and the power supply.

Lighting data

Source type	single chip power LED	Photobiological risk	RG0
CCT	3000K	ULR	0,00%
CRI	> 90	BUG Rating	B0 U1 G0
MacAdam (SDCM)	2	CIE Flux Code	73 91 98 100 100
Source lumen output (lm)	445	LED lifetime	L80 B10 50.000h
Luminaire lumen output (lm)	351	Efficiency class	This product contains a light source of energy efficiency class (EU2019/2015): G
Light emission	Wide		
Beam angle	60°		

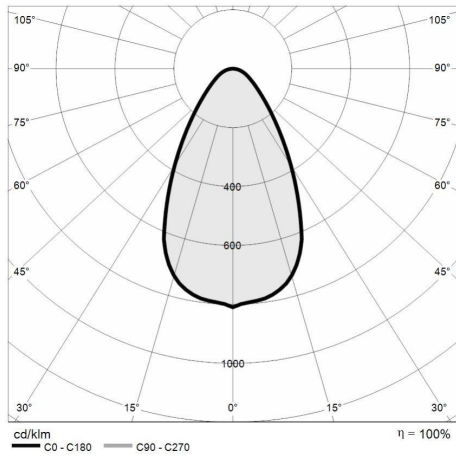
Mechanical data

Diameter (mm)	85	Diffuser material	Extraclear tempered glass
Height (mm)	108	Diffuser thickness (mm)	10
Weight (Kg)	0.632	Class ISO 9223	CX
IP Rating	IP66 / IP68	Optic type	Technopolymer TIR Lens
IK rating	IK10	Maximal working temperature	+50° C
Finishing colour	Black silk-screen	Minimal working temperature	-20° C
Body material	Anodized aluminum anticorodal 6082		

Electrical data

Nominal power (W)	7	Electrical connection	Parallel connection
Power supply (input power type)	Costant voltage - 24V DC	Idroskud® protection	Yes
Ballast	Remote	Inverse polarity protection	Yes
Insulation class	III	Voltage spikes protection	Yes
Dimmable	Yes		
Power cable type	H05RN - F 2x0,75 mm ²		
Power cable length	0,4 m		

Photometry



Technical drawing

