

# mizar

MADE IN ITALY



## LINEO 1.0 | 1.1 | 1.2

LINEAR RECESSED LUMINAIRE

### OPERATING AND INSTALLATION INSTRUCTIONS

8543329\_1

MIZAR is a REER S.p.A. brand  
via Carcano 32 | 10153 Turin | ITALY  
Ph. +39 011 9969833  
e-mail: aftersales@mizar.it | www.mizar.it

### DISPOSAL OF MATERIALS

Dispose of the product in an eco-compatible manner and in accordance with national legislation



#### For Countries in the European Union:

Pursuant to the Directive no. 2012/19/EU on waste electrical and electronic equipment (WEEE).

The crossed out wheeled-bin symbol on the equipment or its packaging means that when the product reaches the end of its useful life it must be collected separately from other waste. Proper separate collection of the discarded equipment for the later environmental-friendly recycling, processing and disposal, helps to avoid any negative impact on the environment and health and encourages re-use and recycling of the materials the equipment is made of.

In each individual Member State of the European Union this product is required to be disposed of in accordance with Directive 2012/19/EU as implemented in the Member State where the product is disposed of.

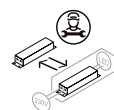
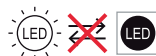
For further information please contact REER or your local dealer.

The precise and complete observance of all rules, indications and prohibitions set out in these instructions is an essential requirement for the correct operation and use of the product. Mizar, therefore, declines all responsibility for anything deriving from the non-observance, even partial, of these instructions.

Specifications subject to change without notice.  
Total or partial reproduction is prohibited without Mizar permission.



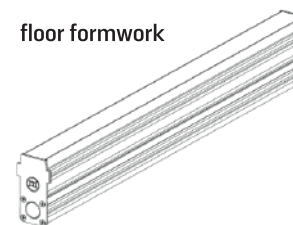
8543329



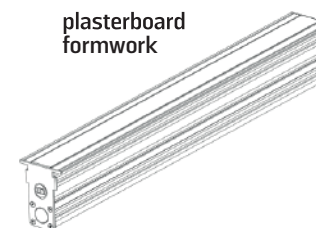
### WARNING

- ⚠ Read the following instructions carefully and keep them.
- ⚠ Technical product data can be found on the back of the sheet and on the product label.
- ⚠ Always switch off the power supply before installation or maintenance.
- ⚠ The device must be installed by qualified personnel. MIZAR accepts no liability if installation is not carried out in accordance with current standard.
- ⚠ Modifications or tampering with the product, not authorized by MIZAR, void all warranty conditions.
- ⚠ Product for indoor and outdoor use.
- ⚠ Never cover visible parts of the product.
- ⚠ No metal parts must be in direct contact or come into contact with aggressive chemicals (fertilisers, aggressive detergents)
- ⚠ Do not stare at the light source during its operation.
- ⚠ Clean the device periodically, avoiding dirt accumulation (at least twice a year).
- ⚠ Please contact MIZAR for Led replacement.
- ⚠ If the screen breaks, the product cannot be used; contact Mizar for replacement.

### ACCESSORIES NECESSARY FOR PRODUCT INSTALLATION



floor formwork

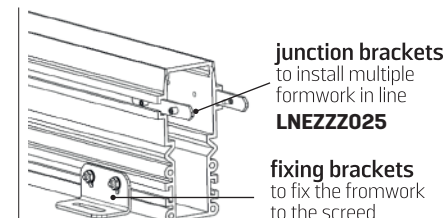


plasterboard formwork

The formwork is equipped with a disposable cover profile, to protect the interior from dirt and material during installation work



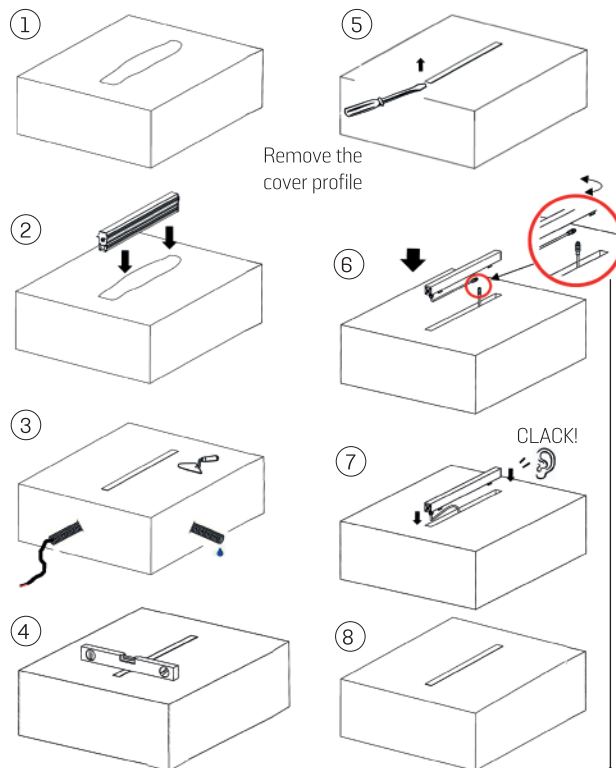
side formwork head  
LNEZZ022  
or  
LNEZZ023



junction brackets  
to install multiple  
formwork in line  
LNEZZ025

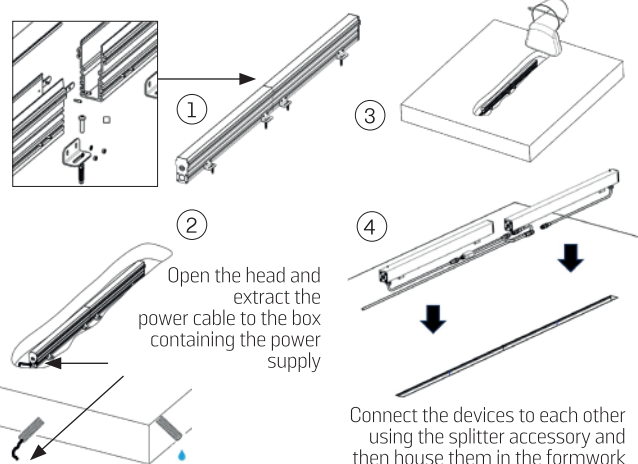
fixing brackets  
to fix the formwork  
to the screed  
LNEZZ024

## FORMWORK AND FIXTURE INSTALLATION



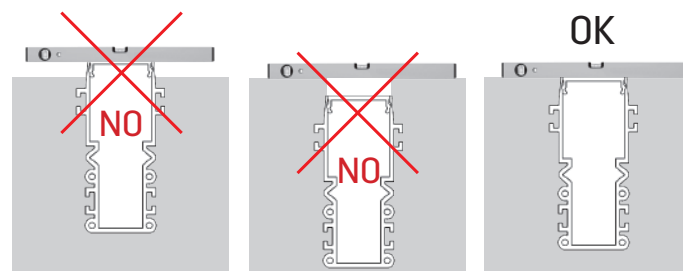
MIZAR electrical connection accessories they do not require self-amalgamating tape or waterproof junction box.

## CONTINUOUS LINE INSTALLATION

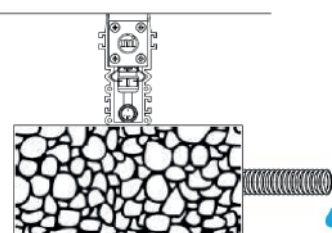


## INSTALLATION OF FORMWORK ON THE GROUND

Prepare a housing of the formwork so that the upper edge is perfectly coplanar to the floor level.

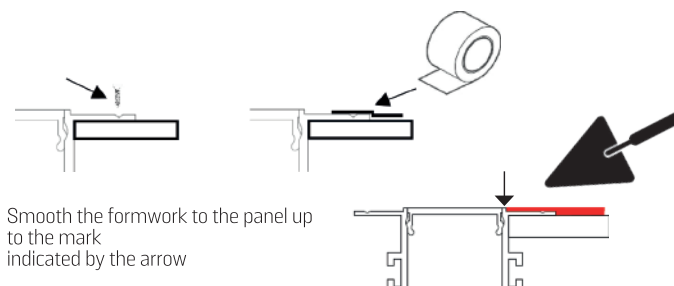


The bottom of the formwork must be in contact with draining material in order not to allow water to stagnate for long periods and to facilitate drainage through pipes.

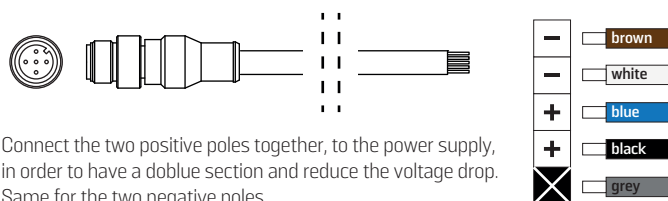


## INSTALLATION OF FORMWORK ON THE PLASTERBOARD

Fix the formwork to the plasterboard panel with 2.9x13 self-tapping screws or with plasterboard tape

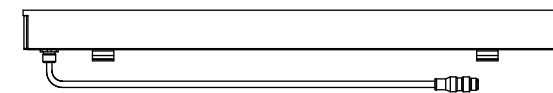


## Connecting extension cords to the power supply using the LNEZZZ021 accessory (mandatory)

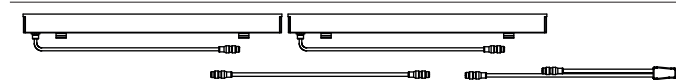


Connect the two positive poles together, to the power supply, in order to have a double section and reduce the voltage drop. Same for the two negative poles.

## ELECTRICAL CONNECTION



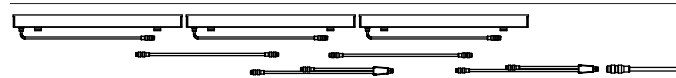
Each LINEO is pre-wired with 0.40 m cable and 5-pin (male) quick connector.



To wire two LINEOs in a continuous line, it will be necessary to use an extension cord of the same length as the product (for example: **LINEO 1000mm** = 1 m extension cord **LNEZZZ013**) and a splitter **LNEZZZ019**.

The quantity of accessories should be calculated in this way:

total number of LINEOs = "x"  
 number of continuous lines = "y"  
 total number of extension cords = "x-y"  
 total number of splitters = "x-y"



example shown above:

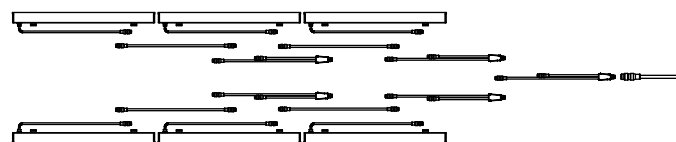
3 **LINEO 1.1** (1010 mm)

2 extension cords 1m **LNEZZZ013**

2 splitters **LNEZZZ019**

1 mandatory accessory **LNEZZZ021** (power supply connection cable)

**LNEZZZ019** splitter accessories can also be used to connect two different LINEO lines before reaching the power supply.



example shown above:

6 **LINEO 1.2** (1510 mm) (3 per line)

4 extension cords 1.5m **LNEZZZ014** (2 per line)

4 splitters **LNEZZZ019** (2 per line)

1 splitter **LNEZZZ019** (extra, to connect the two separate lines)

1 mandatory accessory **LNEZZZ021** (power supply connection cable)

**VERY IMPORTANT:**

the distance from the power supply to the last luminaire must not exceed 15 m (maximum distance means the actual length of the cables)

