



mizar

LUCIS

# Lucis

[ˈluːtʃɪs]

LUCIS is a compact and elegant step light, designed to enhance walkways, stairs, and embankments with discreet yet effective accent lighting. Designed to withstand weathering and corrosion, it is available in two different light outputs and multiple color temperatures. LUCIS is the ideal choice for urban and residential contexts where functionality and aesthetic appeal go hand in hand.

C5  
ISO9223

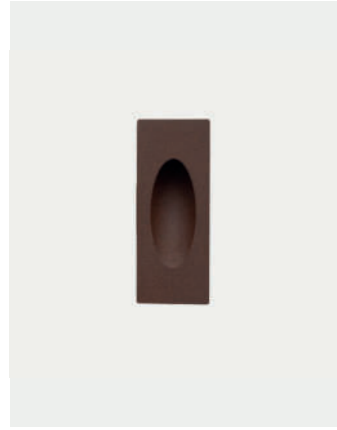
IK10

IP66

IP67



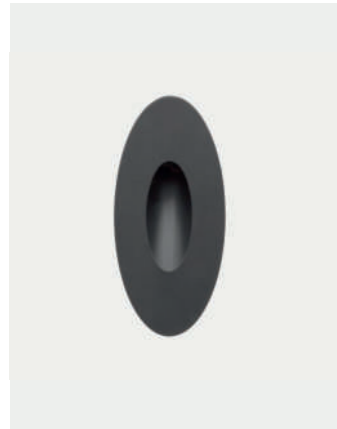
# Lucis



Lucis 1.0



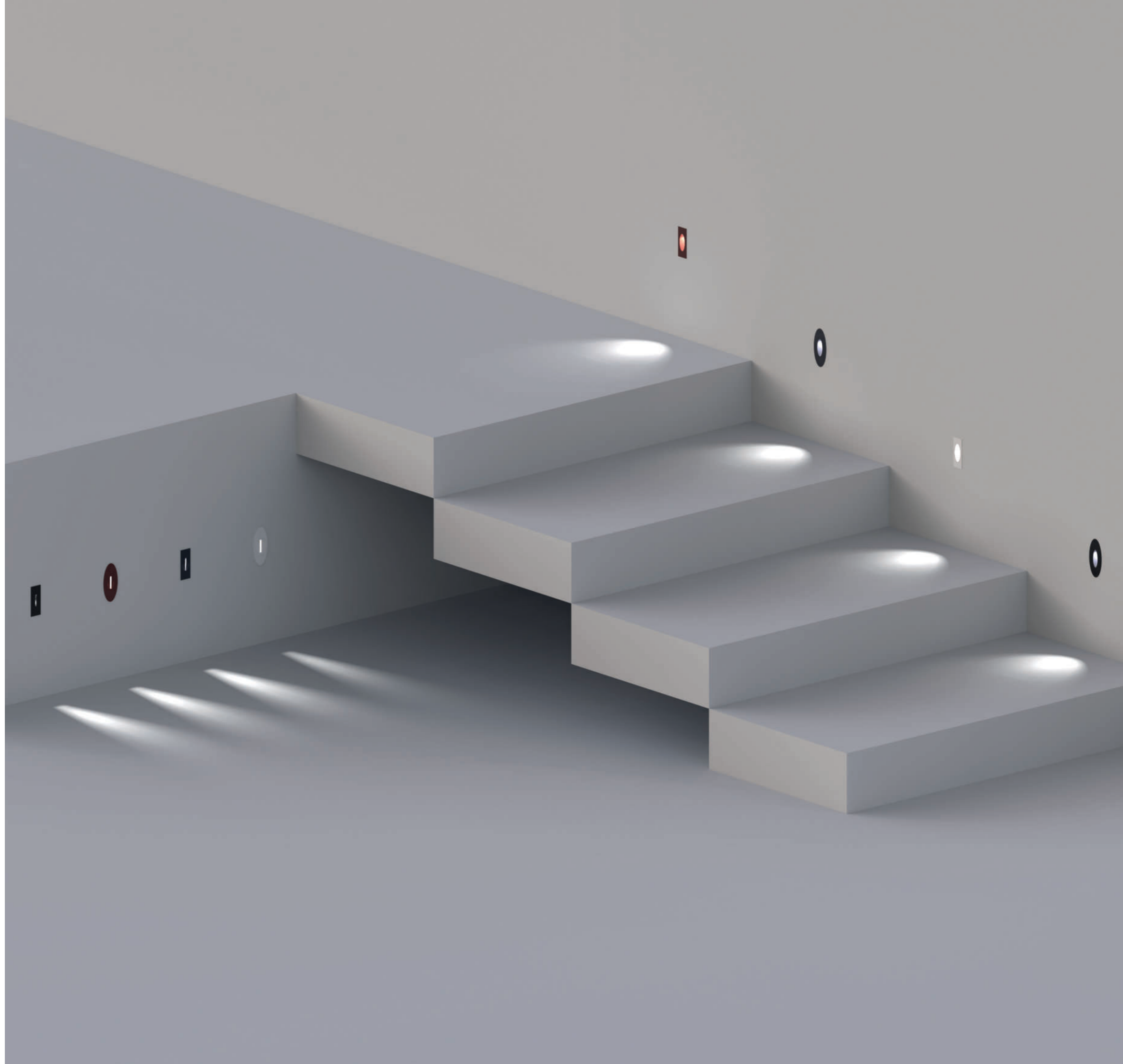
Lucis 1.1



Lucis 2.0



Lucis 2.1



# Lucis / Product features



## Construction quality as the first goal

At MIZAR we think that one of the first features of a "Made in Italy" product is an excellent build quality. The body of the LUCIS is made of 6082 anticorrosion aluminum, CNC-machined from solid. Finishing carried out with primer followed by epoxy polyester powder painting, tested to withstand over 1500h in salt spray.

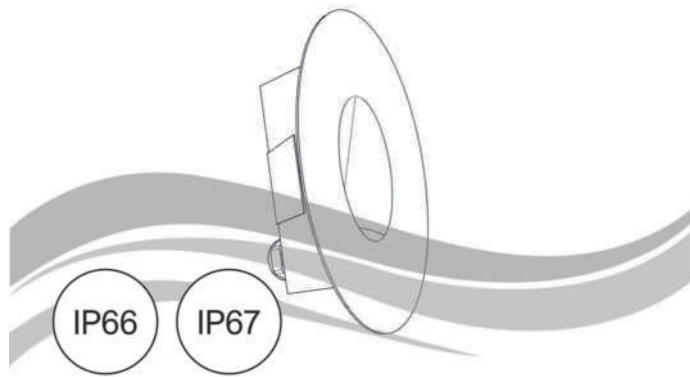
## Corrosion resistance at the highest level

The care taken in the design and choice of materials makes it possible to achieve the highest classes of the international ISO 9223 standard. All LUCIS are rated C5 ("Very High").



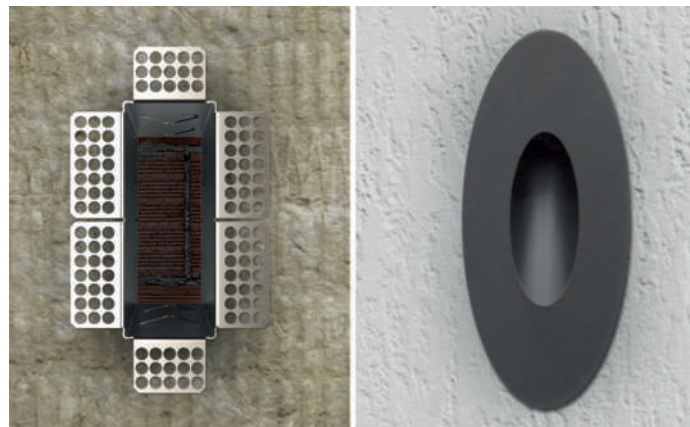
## Highest degrees of protection

LUCIS are fully protected against the ingress of any type of dust (IP 6X) and protected against temporary immersion for up to 30 minutes, to a depth of 1 metre (IP X7). The products are also tested against high-pressure water jets (IP X6). 100 litres per minute, at a pressure of 100 kPa, at a distance of 3 m.



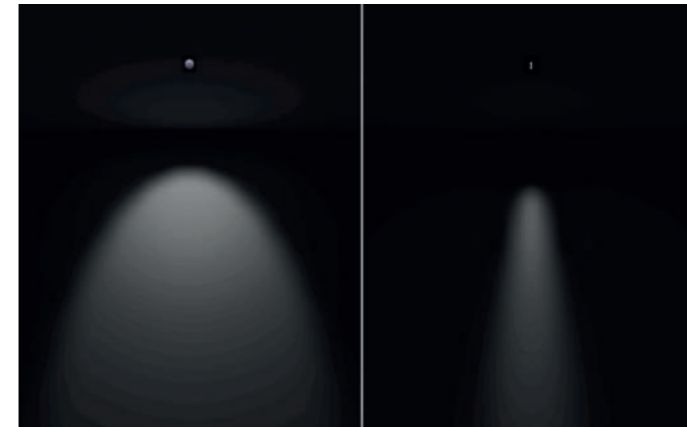
## Modern in installation too

The LUCIS series is complete with accessories for installation on any material, including outercases specifically designed for quick and easy fixing on walls where thermal insulation is present.



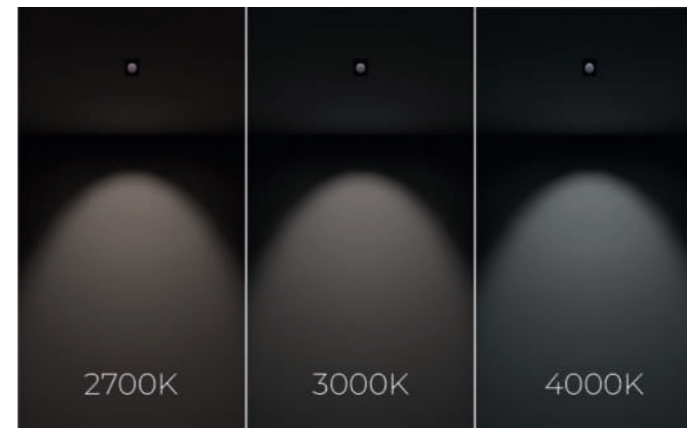
## IdroSkud®

Innovative Mizar exclusive patent to protect electronic components from voltage spikes, polarity reversal, moisture or water infiltrations through the power cable.



## The same product with two different personalities

LUCIS comes with two light distribution options. You can choose the oval optic, for a wider and softer effect. Or the "blade" optic, for a more distinctive and accent distribution.



## Wide choice of color temperatures

The LUCIS series is offered with a wide choice of colour temperatures: 2700K, 3000K and 4000K. In addition – on request – versions with extremely warm colour temperatures (2200 K) are available.

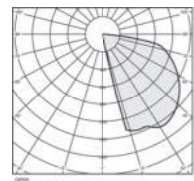
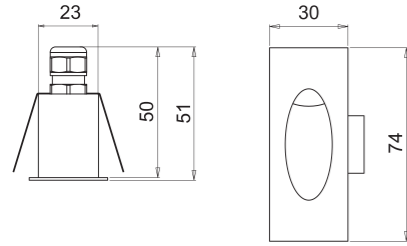


## Faithful reproduction of colors

The LUCIS series products are equipped with a range of top-quality LED light sources. Colour rendering index (CRI) > 90. They also offer excellent colour temperature consistency, with a Step MacAdam value of 3.



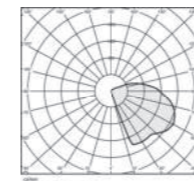
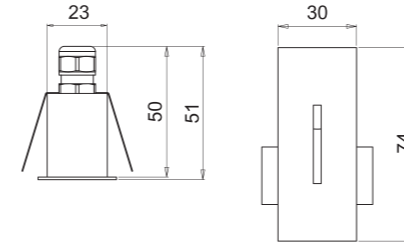
# Lucis 1.0



A34°

Source type	single power-LED
CCT	2700K 3000K 4000K
CRI	>90
Step MacAdam	3
Lumen output	up to 22 lm
Beam angle	A35°
Optical optional	None
LED Lifetime	L80 B10 50.000h
IP rating	IP66 / 67
IK rating	IK10
Type of finishing	Epoxy polyester powder coating
Finishing colour	Anthracite RAL7016 White RAL9003 Corten Black RAL9005
Body material	Anodized aluminium anticorodal 6082
Diffuser material	Polyurethane resin
ISO 9223 class	C5
Operating temperature	-20°C / +50° C
Power	2W
Input power type	Constant voltage 24V
Power supply	Remote
Insulation class	Class III
Dimmable	Yes
Cable type	FR5FOEM7-AD8 2x0,5 mm <sup>2</sup>
Electrical connection	Parallel
Idroskud® protection	Yes

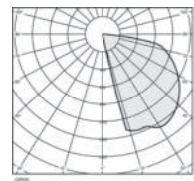
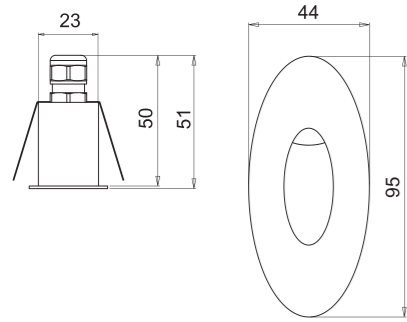
# Lucis 1.1



Blade

Source type	single power-LED
CCT	2700K 3000K 4000K
CRI	>90
Step MacAdam	3
Lumen output	up to 18 lm
Beam angle	Blade
Optical optional	None
LED Lifetime	L80 B10 50.000h
IP rating	IP66 / 67
IK rating	IK10
Type of finishing	Epoxy polyester powder coating
Finishing colour	Anthracite RAL7016 White RAL9003 Corten Black RAL9005
Body material	Anodized aluminium anticorodal 6082
Diffuser material	Polyurethane resin
ISO 9223 class	C5
Operating temperature	-20°C / +50° C
Power	2W
Input power type	Constant voltage 24V
Power supply	Remote
Insulation class	Class III
Dimmable	Yes
Cable type	FR5FOEM7-AD8 2x0,5 mm <sup>2</sup>
Electrical connection	Parallel
Idroskud® protection	Yes

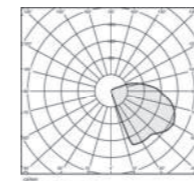
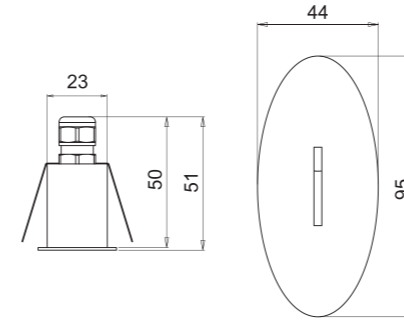
# Lucis 2.0



A34°

Source type	single power-LED
CCT	2700K 3000K 4000K
CRI	>90
Step MacAdam	3
Lumen output	up to 22 lm
Beam angle	A34°
Optical optional	None
LED Lifetime	L80 B10 50.000h
IP rating	IP66 / 67
IK rating	IK10
Type of finishing	Epoxy polyester powder coating
Finishing colour	Anthracite RAL7016 White RAL9003 Corten Black RAL9005
Body material	Anodized aluminium anticorodal 6082
Diffuser material	Polyurethane resin
ISO 9223 class	C5
Operating temperature	-20°C / +50° C
Power	2W
Input power type	Constant voltage 24V
Power supply	Remote
Insulation class	Class III
Dimmable	Yes
Cable type	FR5FOEM7-AD8 2x0,5 mm <sup>2</sup>
Electrical connection	Parallel
Idroskud® protection	Yes

# Lucis 2.1



Blade

Source type	single power-LED
CCT	2700K 3000K 4000K
CRI	>90
Step MacAdam	3
Lumen output	up to 18 lm
Beam angle	Blade
Optical optional	None
LED Lifetime	L80 B10 50.000h
IP rating	IP66 / 67
IK rating	IK10
Type of finishing	Epoxy polyester powder coating
Finishing colour	Anthracite RAL7016 White RAL9003 Corten Black RAL9005
Body material	Anodized aluminium anticorodal 6082
Diffuser material	Polyurethane resin
ISO 9223 class	C5
Operating temperature	-20°C / +50° C
Power	2W
Input power type	Constant voltage 24V
Power supply	Remote
Insulation class	Class III
Dimmable	Yes
Cable type	FR5FOEM7-AD8 2x0,5 mm <sup>2</sup>
Electrical connection	Parallel
Idroskud® protection	Yes

## Accessories

Type	Model	Code	Description
Recessed box	LUCIS 1.0 / 1.1 / 2.0 / 2.1	LUCZZZ000	Galvanized steel wall recessed box
Recessed box	LUCIS 1.0 / 1.1 / 2.0 / 2.1	LUCZZZ001	Galvanized steel thermal wall coating recessed box

## Code configurator

Model	CCT	CRI	Beam angle	Optical options	Finishing	Cable length	Version
<b>LUC00</b> LUCIS 1.0	C 2700K D 3000K F 4000K	C CRI > 90	Z A34°	0 None	B0 Black RAL9005 CT Corten G0 Anthracite RAL7016 W0 White RAL9003	A 0,4 m	00 Standard
<b>LUC01</b> LUCIS 1.1	C 2700K D 3000K F 4000K	C CRI > 90	Z Blade	0 None	B0 Black RAL9005 CT Corten G0 Anthracite RAL7016 W0 White RAL9003	A 0,4 m	00 Standard
<b>LUC02</b> LUCIS 2.0	C 2700K D 3000K F 4000K	C CRI > 90	Z A34°	0 None	B0 Black RAL9005 CT Corten G0 Anthracite RAL7016 W0 White RAL9003	A 0,4 m	00 Standard
<b>LUC03</b> LUCIS 2.1	C 2700K D 3000K F 4000K	C CRI > 90	Z Blade	0 None	B0 Black RAL9005 CT Corten G0 Anthracite RAL7016 W0 White RAL9003	A 0,4 m	00 Standard

### Configuration example

<b>LUC00</b>	C	C	Z	0	B0	A	00
<b>LUC00CCZ0B0A00</b> - LUCIS 1.0 2W BK9005 A34° 2700K 24V							

## Power supplies

Consult the power supply table on the Mizar website in the Download section



Type	Model	Code	Description
Power supply	LUCIS 1.0 / 1.1 / 2.0 / 2.1	MID0019	Power supply DC 24V 14,4W 600mA IP67 ON/OFF
Power supply	LUCIS 1.0 / 1.1 / 2.0 / 2.1	MID0020	Power supply DC 24V 36W 1,5A IP67 ON/OFF
Power supply	LUCIS 1.0 / 1.1 / 2.0 / 2.1	MID0021	Power supply DC 24V 24W 1A IP67 DALI





MIZAR  
a brand of ReeR spa

Via Carcano, 32  
10153 Turin - Italy

mizar.it  
info@mizar.it