

LINEO 1.0

LINEO 1.0 510mm 6W OPAL 2700K 24V

Cod: **LNE00CBK000A00**



IdroSkud® protection system

- polarity reversal protection
- voltage spikes protection
- water infiltration protection



Protection class III

Designed to be supplied from a separated extra-low voltage (SELV) power supply



IP 66

Protected against powerful power jets, 100 liters per minute



IP 67

Protected against temporary immersion (30 minutes) up to 1 meter



IK 10

Protected against impact of 20 J



High temperatures

Design to withstand temperatures up to +50° C



Driver-over

Fixture design to withstand a static load up to 20 kN



CX - Extreme

corrosion resistance level ISO 9223



Mizar warranty

5 years warranty



Technical description

Linear in-ground luminaire, drive-over, suitable for outdoor environments (IP66/IP67), with operating temperature range: -20°C / +50°C. The body is made of PMMA, transparent and opal on the upper side; the endcaps are made of 316L stainless steel. The light source is LED SMD3014, powered at 24V with built-in driver. The luminous flux makes it ideal for marking pedestrian and driveway paths, or creating light cuts on floors, walls and ceilings. Color rendering index CRI > 80. Lineo is equipped with IdroSkud® system to protect electronic components from voltage spikes, polarity reversal and water infiltration. Installation accessories are provided (floor and plasterboard outercase; cable extensions up to 15 m). The product must be combined with a power supply to ensure its operation. The power supply must be ordered separately. The amount of luminaires that can be connected to a single power supply varies depending on the type of installation. It is up to the installer to verify the possible voltage drop by evaluating the distance between the product and the power supply.

Lighting data

Source type	SMD chip 3014
CCT	2700K
CRI	> 80
MacAdam (SDCM)	3
Source lumen output (lm)	608
Luminaire lumen output (lm)	146
Light emission	Diffused
Beam angle	120°

Photobiological risk	RG0
ULR	100.00%
BUG Rating	B0 U3 G0
CIE Flux Code	0 0 0 0 100
LED lifetime	L80 B10 50.000h
Efficiency class	This product contains a light source of energy efficiency class (EU2019/2015): F

Mechanical data

Width (mm)	27
Length (mm)	510
Height (mm)	49
Weight (g)	550
IP Rating	IP66 / IP67
IK rating	IK10
Finishing colour	Opal white
Frame material	Stainless steel 316L
Body material	Transparent PMMA
Diffuser material	Opal PMMA

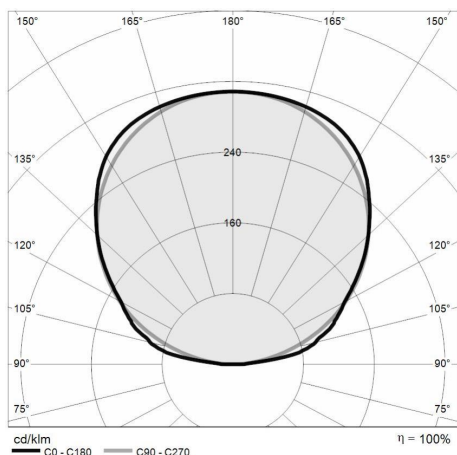
Class ISO 9223	CX
Optical optional	None
Maximal working temperature	+50° C
Minimal working temperature	-20° C
Maximal static load (kN)	20
Walk-over	Yes
Driver-over	Yes
Maximal surface temperature	+50° C
Areas EN 60598-2-13	A1 / A2 / A3 / A4

Electrical data

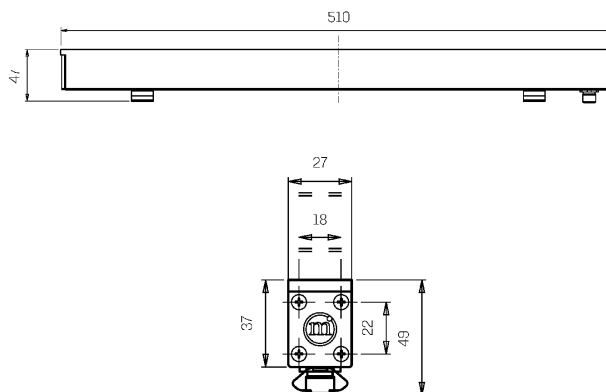
Nominal power (W)	6
Power supply (input power type)	Costant voltage - 24V
Ballast	Remote
Insulation class	III
Dimmable	Yes
Connector type	M12 - 5 poles IP67
Power cable length	0,4 m

Electrical connection	Parallel connection
Idroskud® protection	Yes
Inverse polarity protection	Yes
Voltage spikes protection	Yes

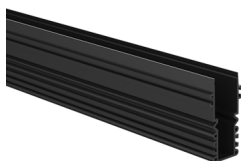
Photometry



Technical drawing



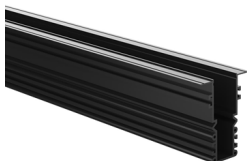
Accessories



FLOOR OUTERCASE 511 MM

Outercase PC for floor 511mm LINEO

Cod: LNEZZZ000



PLASTER OUTERCASE 511 MM

Outercase PC for plasterboard 511mm LINEO

Cod: LNEZZZ003



EXTENSION 0,5 M

5-pole extension 0.5m OT/Ni rings for LINEO

Cod: LNEZZZ012



EXTENSION 1 M

5-pole extension 1m OT/Ni rings for LINEO

Cod: LNEZZZ013



EXTENSION 1,5 M

5-pole extension 1.5m OT/Ni rings for LINEO

Cod: LNEZZZ014



EXTENSION 5 M

5-pole extension 5m OT/Ni rings for LINEO

Cod: LNEZZZ015



EXTENSION 10 M

5-pole extension 10m OT/Ni rings for LINEO

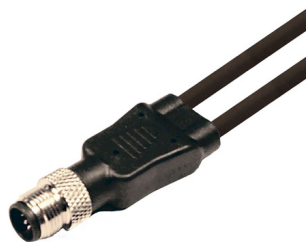
Cod: LNEZZZ016



EXTENSION 15 M

5-pole extension 15m OT/Ni rings for LINEO

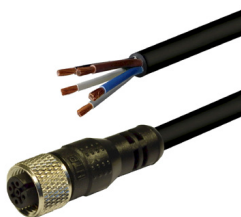
Cod: LNEZZZ017



SPLITTER 2 WAY

2-way 5-pole splitter with OT/NI rings for
LINEO

Cod: LNEZZZ019



POWER CABLE

Power cable 5 poles - M12 female 1,5m

Cod: LNEZZZ021



OUTERCASE HEAD KIT

Head kit for ground LINEO outercase

Cod: LNEZZZ022



PLASTER OUTERCASE HEAD KIT

Head kit for plasterboard LINEO
outercase

Cod: LNEZZZ023



OUTERCASE FIXING KIT

Fixing kit for LINEO outercase

Cod: LNEZZZ024



OUTERCASE COUPLING KIT

Bracket kit for coupling LINEO
outercase

Cod: LNEZZZ025



EXTRACTION KIT

Extraction kit from outercase for LINEO

Cod: LNEZZZ026



NOT DIMMABLE POWER SUPPLY

Power supply DC 24V 70W 2,9A IP67

Cod: MID0028



NOT DIMMABLE POWER SUPPLY

Power supply DC 24V 150W 6,25A IP67

Cod: MID0029



DIMMABLE POWER SUPPLY

Power supply DC 24V 120W 5A IP67
DALI2/PWM

Cod: MID0030



DIMMABLE POWER SUPPLY

Power supply DC 24V 200W 5A IP67
DALI2/PWM

Cod: MID0031