



# OCEANO 4.0 RGBW

OCEANO 4.0 8W ST-ST 26° RGBW 24V  
PWM 0,4M

Cod: **CEA08PCM001A00**



#### IdroSkud® protection system

- polarity reversal protection
- voltage spikes protection
- water infiltration protection



#### Protection class III

Designed to be supplied from a separated extra-low voltage (SELV) power supply



#### IP 66

Protected against powerful power jets, 100 liters per minute



#### IP 68 up to 10m

Protected against continuous immersion up to 10 meters



#### IK 09

Protected against impact of 10 J



#### High temperatures

Design to withstand temperatures up to +50° C



#### Walk-over

Fixture design to withstand a static load up to 5 kN



#### CX - Extreme

corrosion resistance level ISO 9223



#### RGBW luminaire

Light source allows to mix colours controlling four channels



#### Mizar warranty

5 years warranty



## Technical description

Inground luminaire, walk-over, suitable for outdoor and underwater environments up to 10 m (IP66/IP68), with operating temperature range: -20°C / +50°C. To provide maximum versatility of application, the body can be made of aluminum or steel; the frame, aluminum, steel or brass. The light source is a multi-chip LED RGBW powered by constant voltage 24V, for maximum power of 8W, paired with a specific color-mixing TIR lens. The luminous flux makes it ideal for marking pedestrian paths or illuminating architectural details. The source is recessed for greater visual comfort. Color rendering index CRI > 90. Oceano is equipped with IdroSkud® system to protect electronic components from voltage spikes, polarity reversal and water infiltration. There are optionals for anti-glare (honeycomb and louvre) and installation accessories (draining and waterproof outercase and spring for ceiling attachment). The product must be combined with a power supply to ensure its operation. The power supply must be ordered separately. The amount of luminaires that can be connected to a single power supply varies depending on the type of

MIZAR is a brand of REER SPA

Via Carcano 32 - 10153 - Torino, Italy

Tel: +39 011 9969833 - Mail: [info@mizar.it](mailto:info@mizar.it) - [www.mizar.it](http://www.mizar.it)

installation. It is up to the installer to verify the possible voltage drop by evaluating the distance between the product and the power supply.

## Lighting data

|                             |                |                      |                 |
|-----------------------------|----------------|----------------------|-----------------|
| Source type                 | multi-chip LED | Beam angle           | 26°             |
| CCT                         | RGBW (4000K)   | Photobiological risk | RG0             |
| CRI                         | > 80           | ULR                  | 100.00%         |
| MacAdam (SDCM)              | 3              | BUG Rating           | B0 U3 G0        |
| Source lumen output (lm)    | 640            | CIE Flux Code        | 0 0 0 0 100     |
| Luminaire lumen output (lm) | 329            | LED lifetime         | L80 B10 50.000h |
| Light emission              | Medium         |                      |                 |

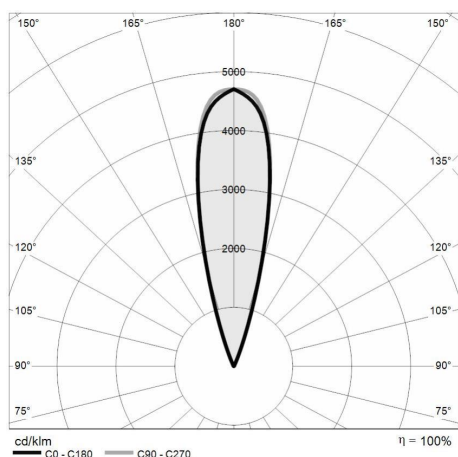
## Mechanical data

|                         |                           |                             |                        |
|-------------------------|---------------------------|-----------------------------|------------------------|
| Diameter (mm)           | 90                        | Class ISO 9223              | CX                     |
| Height (mm)             | 114                       | Optic type                  | Technopolymer TIR Lens |
| Weight (g)              | 1510                      | Optical optional            | None                   |
| IP Rating               | IP66 / IP68 10m           | Maximal working temperature | +50° C                 |
| IK rating               | IK09                      | Minimal working temperature | -20° C                 |
| Shape                   | Round                     | Maximal static load (kN)    | 5                      |
| Finishing colour        | Steel / Steel             | Walk-over                   | Yes                    |
| Frame material          | Stainless steel 316L      | Driver-over                 | No                     |
| Body material           | Stainless steel 316L      | Maximal surface temperature | +50° C                 |
| Diffuser material       | Extraclear tempered glass | Areas EN 60598-2-13         | A1 / A2                |
| Diffuser thickness (mm) | 8                         |                             |                        |

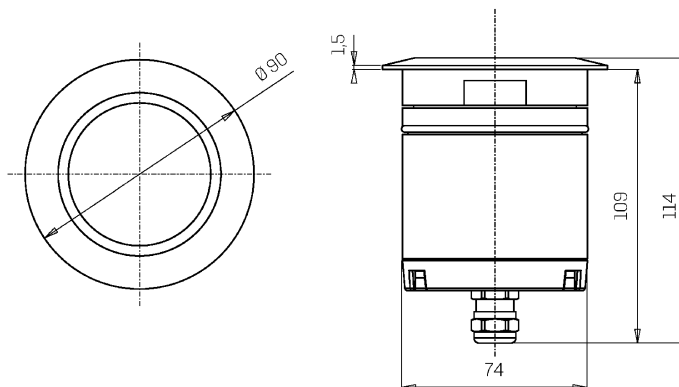
## Electrical data

|                                 |                                    |                             |                     |
|---------------------------------|------------------------------------|-----------------------------|---------------------|
| Nominal power (W)               | 8                                  | Electrical connection       | Parallel connection |
| Power supply (input power type) | Costant voltage - 24V              | Idroskud® protection        | Yes                 |
| Ballast                         | Remote                             | Inverse polarity protection | Yes                 |
| Insulation class                | III                                | Voltage spikes protection   | Yes                 |
| Dimmable                        | Yes (PWM)                          |                             |                     |
| Power cable type                | FR5FOEM7-AD8 6x0,5 mm <sup>2</sup> |                             |                     |
| Power cable length              | 0,4 m                              |                             |                     |

## Photometry



## Technical drawing



## Accessories



### DRAINING OUTERCASE

Outer case draining OCEANO 4

Cod: CEAZZ010



### SLIM DRAINING OUTERCASE

Outer case draining slim OCEANO 4

Cod: CEAZZ011



### SLIM WATER-PROOF OUTERCASE

Outer case waterproof slim OCEANO 4

Cod: CEAZZ012



### NOT DIMMABLE POWER SUPPLY

Power supply 220/240 50/60Hz ON/OFF  
24V 14,4W IP67

Cod: MID0019



### NOT DIMMABLE POWER SUPPLY

Power supply 220/240 50/60Hz ON/OFF  
24V 36W IP67

Cod: MID0020



### DIMMABLE POWER SUPPLY

Power supply 220/240 50/60Hz 24V  
24W IP67 DALI

Cod: MID0021



### RGBW CONTROL UNIT

Control unit WT5 5-channel RGBW  
PWM/WiFi

Cod: MID0023



### NOT DIMMABLE POWER SUPPLY

Power supply DC 24V 70W 2,9A IP67

Cod: MID0028



**NOT DIMMABLE POWER SUPPLY**

Power supply DC 24V 150W 6,25A IP67

Cod: MID0029



**DIMMABLE POWER SUPPLY**

Power supply DC 24V 120W 5A IP67  
DALI2/PWM

Cod: MID0030



**DIMMABLE POWER SUPPLY**

Power supply DC 24V 200W 5A IP67  
DALI2/PWM

Cod: MID0031



**RGBW REMOTE**

Remote control RGBW RT 4zone RF  
2.4GHz

Cod: MID1000



**RGBW TOUCH PANEL**

Touch wall panel RGBW 4 zone

Cod: MID1001