



# LUCIS 2.1

LUCIS 2.1 2W AN7016 BLADE 3000K 24V

Cod: **LUC03DCZ0G0A00**



#### IdroSkud® protection system

- polarity reversal protection
- voltage spikes protection
- water infiltration protection



#### Protection class III

Designed to be supplied from a separated extra-low voltage (SELV) power supply



#### IP 66

Protected against powerful power jets, 100 liters per minute



#### IP 67

Protected against temporary immersion (30 minutes) up to 1 meter



#### IK 10

Protected against impact of 20 J



#### High temperatures

Design to withstand temperatures up to +50° C



#### C5 - Very high

corrosion resistance level ISO 9223



#### Mizar warranty

5 years warranty



## Technical description

Wall-recessed fixture, suitable for outdoor environments (IP66/IP67), with wide operating temperature range: -20°C / +50°C. The body is made of aluminum protected by polyester epoxy paint to ensure corrosion resistance of 1500 hours in salt spray test. The light source consists of a single 2W power Led chip powered at 24V, constant voltage with integrated driver. The oval bezel has a blade-shaped opening to obtain a narrow linear light beam oriented toward the floor. The luminous flux and design make it ideal as a walkway marker light for footpaths or flights of stairs. Color rendering index CRI > 90. The Lucis is equipped with IdroSkud® system to protect electronic components from voltage spikes, polarity reversal and water infiltration. Installation accessories are provided (wall and exterior insulation coating outercase). The product must be combined with a power supply to ensure its operation. The power supply must be ordered separately. The amount of luminaires that can be connected to a single power supply varies depending on the type of installation. It is up to the installer to verify the possible voltage drop by evaluating the distance between the product and the power supply.

## Lighting data

|                             |                       |                      |  |
|-----------------------------|-----------------------|----------------------|--|
| Source type                 | single chip power LED | Photobiological risk | RG0  |
| CCT                         | 3000K                 | ULR                  | 100.00%  |
| CRI                         | > 90                  | BUG Rating           | B0 U1 G0   |
| MacAdam (SDCM)              | 3                     | CIE Flux Code        | 13 37 69 72 100  |
| Source lumen output (lm)    | 157                   | LED lifetime         | L80 B10 50.000h  |
| Luminaire lumen output (lm) | 17                    | Efficiency class     | This product contains a light source of energy efficiency class (EU2019/2015): F |
| Light emission              | Blade                 |                      |  |
| Beam angle                  | 10°                   |                      |  |

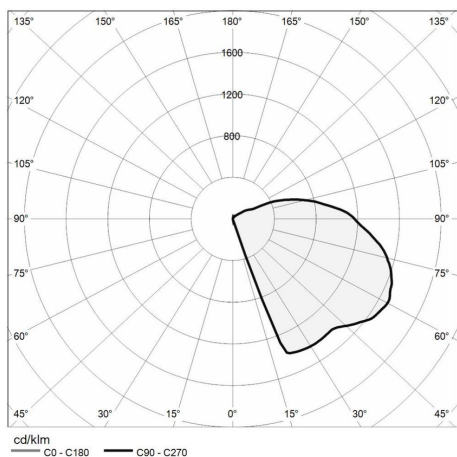
## Mechanical data

|                   |   |                             |                                    |
|-------------------|---|-----------------------------|------------------------------------|
| Width (mm)        | 44  | Body material               | Anodized aluminum anticorodal 6082 |
| Length (mm)       | 51  | External screws material    | Stainless steel 316L (A4)          |
| Height (mm)       | 95  | Diffuser material           | Polyurethane resin                 |
| Weight (g)        | 185   | Class ISO 9223              | C5                                 |
| IP Rating         | IP66 / IP67   | Optical optional            | None                               |
| IK rating         | IK10  | Maximal working temperature | +50° C                             |
| Type of finishing | Protective primer followed by epoxy and polyester paint | Minimal working temperature | -20° C                             |
| Finishing colour  | Anthracite RAL7016                                      |                             |                                    |

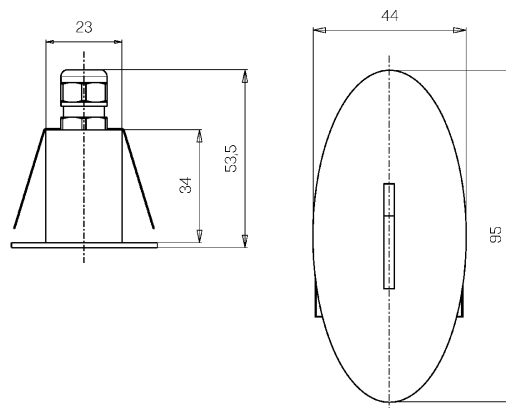
## Electrical data

|                                 |                                      |                             |                     |
|---------------------------------|--------------------------------------|-----------------------------|---------------------|
| Nominal power (W)               | 2                                    | Electrical connection       | Parallel connection |
| Power supply (input power type) | Costant voltage - 24V                | Idroskud® protection        | Yes                 |
| Ballast                         | Remote                               | Inverse polarity protection | Yes                 |
| Insulation class                | III                                  | Voltage spikes protection   | Yes                 |
| Dimmable                        | Yes                                  |                             |                     |
| Power cable type                | FR5FOEM7 - AD8 2x0,5 mm <sup>2</sup> |                             |                     |
| Power cable length              | 0,4 m                                |                             |                     |

## Photometry



## Technical drawing



## Accessories



### WALL OUTERCASE

Outercase standard wall LUCIS

Cod: LUCZZZ000



### WALL INSULATION OUTERCASE

Outercase wall insulation LUCIS

Cod: LUCZZZ001



### NOT DIMMABLE POWER SUPPLY

Power supply DC 24V 14,4W IP67  
ON/OFF

Cod: MID0019



### NOT DIMMABLE POWER SUPPLY

Power supply DC 24V 36W IP67 ON/OFF

Cod: MID0020



### DIMMABLE POWER SUPPLY

Power supply 220/240 50/60Hz 24V  
24W IP67 DALI

Cod: MID0021