



# VITRUM 2.0

VITRUM 2.0 3W BLACK 10° 4000K 24V  
HC 5M

Cod: **VIT02FCS100H00**



#### IdroSkud® protection system

- polarity reversal protection
- voltage spikes protection
- water infiltration protection



#### Protection class III

Designed to be supplied from a separated extra-low voltage (SELV) power supply



#### IP 66

Protected against powerful power jets, 100 liters per minute



#### IP 68

Protected against continuous immersion up to 3 meters



#### IK 10

Protected against impact of 20 J



#### High temperatures

Design to withstand temperatures up to +50°C



#### Walk-over

Fixture design to withstand a static load up to 5 kN



#### CX - Extreme

corrosion resistance level ISO 9223



#### Mizar warranty

5 years warranty



## Technical description

Fully flush inground luminaire, walk-over, suitable for outdoor and underwater environments (IP66/IP68) with operating temperature range: -20°C / +50°C. Its special feature is that it has a tempered glass screen without metal frame, transparent, with black screen-printed edge. The body is made of black anodized anticorodal aluminum. The light source consists of a single 3W power Led chip powered at 24Vdc constant voltage with integrated driver. The minimalist design makes it ideal as a lighting fixture for elegant indoor and outdoor environments, as well as for high-humidity situations (spas, wine cellars). The source is set back for greater visual comfort. Color rendering index CRI > 90. Vitrum is equipped with IdroSkud® system to protect electronic components from voltage spikes, polarity reversal and water infiltration. There are optionals for anti-glare (honeycomb) and installation accessories (draining, watertight and plasterboard outercase). The product must be combined with a power supply to ensure its operation. The power supply must be ordered separately. The amount of luminaires that can be connected to a single power supply varies depending on the type of installation. It is up to the installer to verify the possible voltage drop by evaluating the distance between the product and the power supply.

## Lighting data

|                             |                       |
|-----------------------------|-----------------------|
| Source type                 | single chip power LED |
| CCT                         | 4000K                 |
| CRI                         | > 90                  |
| MacAdam (SDCM)              | 2                     |
| Source lumen output (lm)    | 236                   |
| Luminaire lumen output (lm) | 152                   |
| Light emission              | Narrow                |
| Beam angle                  | 10°                   |

|                      |  |
|----------------------|--|
| Photobiological risk | RG0  |
| ULR                  | 100.00%  |
| BUG Rating           | B0 U3 G0   |
| CIE Flux Code        | 0 0 0 0 100  |
| LED lifetime         | L80 B10 50.000h  |
| Efficiency class     | This product contains a light source of energy efficiency class (EU2019/2015): F |

## Mechanical data

|                          |                                       |
|--------------------------|---------------------------------------|
| Diameter (mm)            | 60                                    |
| Height (mm)              | 87                                    |
| Weight (g)               | 278                                   |
| IP Rating                | IP66 / IP68                           |
| IK rating                | IK10                                  |
| Finishing colour         | Black silk-screen                     |
| Body material            | Anodized aluminum<br>anticorodal 6082 |
| External screws material | Stainless steel 316L (A4)             |
| Diffuser material        | Extraclear tempered glass             |
| Diffuser thickness (mm)  | 10                                    |

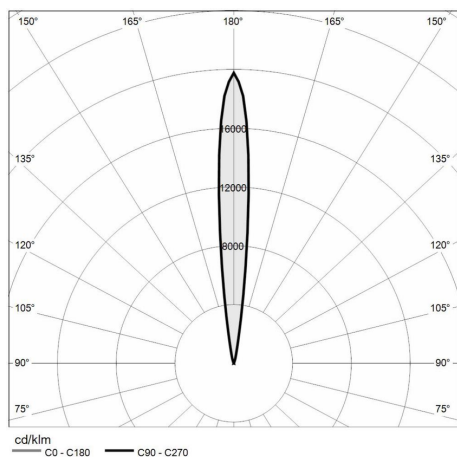
|                             |                        |
|-----------------------------|------------------------|
| Class ISO 9223              | CX                     |
| Optic type                  | Technopolymer TIR Lens |
| Optical optional            | Honeycomb              |
| Maximal working temperature | +50° C                 |
| Minimal working temperature | -20° C                 |
| Maximal static load (kN)    | 5                      |
| Walk-over                   | Yes                    |
| Driver-over                 | No                     |
| Maximal surface temperature | +50° C                 |
| Areas EN 60598-2-13         | A1 / A2                |

## Electrical data

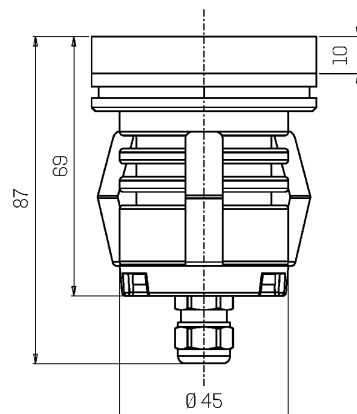
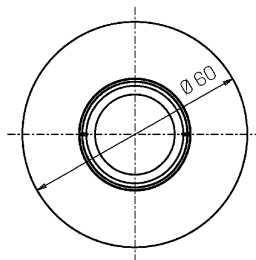
|                                 |                                  |
|---------------------------------|----------------------------------|
| Nominal power (W)               | 3                                |
| Power supply (input power type) | Costant voltage - 24V            |
| Ballast                         | Remote                           |
| Insulation class                | III                              |
| Dimmable                        | Yes                              |
| Power cable type                | H05RN - F 2x0,75 mm <sup>2</sup> |
| Power cable length              | 5 m                              |

|                             |                     |
|-----------------------------|---------------------|
| Electrical connection       | Parallel connection |
| Idroskud® protection        | Yes                 |
| Inverse polarity protection | Yes                 |
| Voltage spikes protection   | Yes                 |

## Photometry



## Technical drawing



## Accessories



### NOT DIMMABLE POWER SUPPLY

Power supply 220/240 50/60Hz ON/OFF  
24V 14,4W IP67

Cod: MID0019



### NOT DIMMABLE POWER SUPPLY

Power supply 220/240 50/60Hz ON/OFF  
24V 36W IP67

Cod: MID0020



### DIMMABLE POWER SUPPLY

Power supply 220/240 50/60Hz 24V  
24W IP67 DALI

Cod: MID0021



### DRAINING OUTERCASE

Outercase draining VITRUM 2

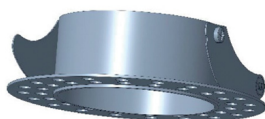
Cod: VITZZZ001



### SLIM DRAINING OUTERCASE

Outercase slim VITRUM 2

Cod: VITZZZ004



### PLASTERBOARD RING

Plasterboard ring VITRUM 2

Cod: VITZZZ007



### EXTRACTION KIT

Suction cup for VITRUM 2

Cod: VITZZZ010