



# OCEANO 3.1

OCEANO 3.1 3W ST-ST 10° 2700K 24V LV  
1,5M

Cod: **CEA05CCS201C00**



#### IdroSkud® protection system

- polarity reversal protection
- voltage spikes protection
- water infiltration protection



#### Protection class III

Designed to be supplied from a separated extra-low voltage (SELV) power supply



#### IP 66

Protected against powerful power jets, 100 liters per minute



#### IP 68 up to 10m

Protected against continuous immersion up to 10 meters



#### IK 10

Protected against impact of 20 J



#### High temperatures

Design to withstand temperatures up to +50° C



#### Walk-over

Fixture design to withstand a static load up to 5 kN



#### CX - Extreme

corrosion resistance level ISO 9223



#### Mizar warranty

5 years warranty

## Technical description

Inground luminaire, walk-over, suitable for outdoor and underwater environments up to 10 m (IP66/IP68), with operating temperature range: -20°C / +50°C. To provide maximum versatility of application, the body can be made of aluminum or steel; the frame, aluminum, steel or brass. The light source consists of a single 3W power Led chip powered at 24V constant voltage with integrated driver. The luminous flux makes it ideal for marking pedestrian paths or illuminating architectural details. The source is recessed for greater visual comfort. Color rendering index CRI > 90. Oceano is equipped with IdroSkud® system to protect electronic components from voltage spikes, polarity reversal and water infiltration. There are optionals for anti-glare (honeycomb and louvre) and installation accessories (draining and waterproof outercase and spring for ceiling attachment). The product must be combined with a power supply to ensure its operation. The power supply must be ordered separately. The amount of luminaires that can be connected to a single power supply varies depending on the type of installation. It is up to the installer to verify the possible voltage drop by evaluating the distance between the product and the power supply.

## Lighting data

|                             |                       |
|-----------------------------|-----------------------|
| Source type                 | single chip power LED |
| CCT                         | 2700K                 |
| CRI                         | > 90                  |
| MacAdam (SDCM)              | 2                     |
| Source lumen output (lm)    | 236                   |
| Luminaire lumen output (lm) | 136                   |
| Light emission              | Narrow                |
| Beam angle                  | 10°                   |

|                      |  |
|----------------------|--|
| Photobiological risk | RG0  |
| ULR                  | 100.00%  |
| BUG Rating           | B0 U3 G0   |
| CIE Flux Code        | 0 0 0 0 100  |
| LED lifetime         | L80 B10 50.000h  |
| Efficiency class     | This product contains a light source of energy efficiency class (EU2019/2015): F |

## Mechanical data

|                          |                           |
|--------------------------|---------------------------|
| Width (mm)               | 60                        |
| Length (mm)              | 60                        |
| Height (mm)              | 93                        |
| Weight (g)               | 633                       |
| IP Rating                | IP66 / IP68 10m           |
| IK rating                | IK10                      |
| Shape                    | Square                    |
| Finishing colour         | Steel / Steel             |
| Frame material           | Stainless steel 316L      |
| Body material            | Stainless steel 316L      |
| External screws material | Stainless steel 316L (A4) |
| Diffuser material        | Extraclear tempered glass |

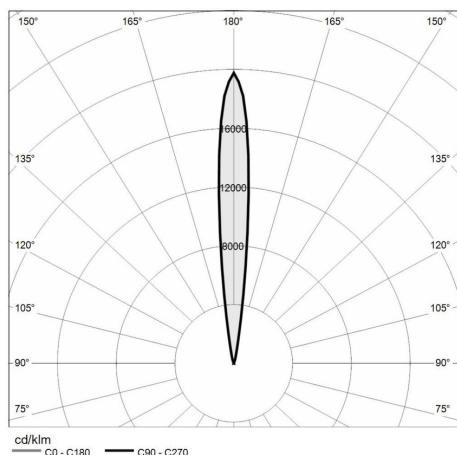
|                             |                        |
|-----------------------------|------------------------|
| Diffuser thickness (mm)     | 8                      |
| Class ISO 9223              | CX                     |
| Optic type                  | Technopolymer TIR Lens |
| Optical optional            | Louvre                 |
| Maximal working temperature | +50° C                 |
| Minimal working temperature | -20° C                 |
| Maximal static load (kN)    | 5                      |
| Walk-over                   | Yes                    |
| Driver-over                 | No                     |
| Maximal surface temperature | +50° C                 |
| Areas EN 60598-2-13         | A1 / A2                |

## Electrical data

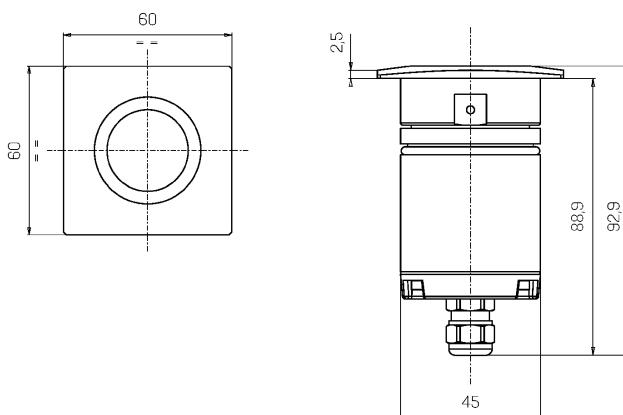
|                                 |                       |
|---------------------------------|-----------------------|
| Nominal power (W)               | 3                     |
| Power supply (input power type) | Costant voltage - 24V |
| Ballast                         | Remote                |
| Insulation class                | III                   |
| Dimmable                        | Yes                   |
| Power cable type                | H05RN - F 2x0,75 mm²  |
| Power cable length              | 1,5 m                 |

|                             |                     |
|-----------------------------|---------------------|
| Electrical connection       | Parallel connection |
| Idroskud® protection        | Yes                 |
| Inverse polarity protection | Yes                 |
| Voltage spikes protection   | Yes                 |

## Photometry



## Technical drawing



## Accessories



### DRAINING OUTERCASE

Outer case draining OCEANO 3

Cod: CEAZZ006



### SLIM DRAINING OUTERCASE

Outer case draining slim OCEANO 3

Cod: CEAZZ007



### SLIM WATER-PROOF OUTERCASE

Outer case waterproof slim OCEANO 3

Cod: CEAZZ008



### NOT DIMMABLE POWER SUPPLY

Power supply 220/240 50/60Hz ON/OFF  
24V 14,4W IP67

Cod: MID0019



### NOT DIMMABLE POWER SUPPLY

Power supply 220/240 50/60Hz ON/OFF  
24V 36W IP67

Cod: MID0020



### DIMMABLE POWER SUPPLY

Power supply 220/240 50/60Hz 24V  
24W IP67 DALI

Cod: MID0021



### SPRING FOR CEILING MOUNTING

Spring for ceiling mounting OCEANO 3

Cod: CEAZZ018